

**United Nations / Austria Symposium on Space Weather Data,
Instruments and Models: Looking Beyond the ISWI**

**GPS-TEC measurements at low latitude using UNB Ionospheric Modeling
Technique**

BY
D. J. SHETTI

DEPARTMENT OF PHYSICS,
SMT. KASTURBAI WALCHAND COLLEGE,
SANGLI - 416 416
INDIA (M.S)
2013

Abstract:

UNB Ionospheric Modeling Techniques computes TEC from GPS observables at both L1 and L2 frequencies in order to provide ionospheric corrections to communication, surveillance and navigation systems operating at one frequency. The software estimates the coefficients of a linear spatial approximation of TEC over each station in addition to the satellite and receiver differential biases, modeling the ionospheric measurements from a dual frequency GPS receiver with the single-layer ionospheric model. The GPS data of IGS Hyderabad station (17.41°N , 78.55°E), Bangalore (13.02°N , 77.57°E) and Kolhapur station (16.8°N , 74.2°E) have been used to measure Total Electron Content (TEC) of the ionosphere during the period of different geomagnetic storm events. The effect of the geomagnetic storm on ionosphere shows an increase in the VTEC values, followed by sudden decrease in Dst values in some storm cases. In the next few years there will be ample opportunities to study in detail solar-terrestrial events using UNB Ionospheric Modeling Techniques for better understanding of the effect of solar activity on Total Electron Content (TEC) at low latitudes.

Key Words: GPS, Total Electron Content, Ionosphere

The TEC depends on the geographic latitude, longitude, local time, season, geomagnetic activity and viewing direction

To account for the ionospheric delay, the GPS receivers employ two L-Band frequencies (L1=1575 MHz and L2=1227 MHz).

The TEC can be estimated, either by using GPS carrier phase or pseudo-range delays.

STEC and VTEC

$$STEC = \int_r^{sv} N dr = \left(\frac{f_2^2}{f_1^2 - f_2^2} \right) \frac{2 f_1^2}{K} \Delta P_{1,2}$$

$$= 9.509 E16 \Delta P_{1,2}$$

$\Delta P_{1,2} = P_1 - P_2$ where P_1 and P_2 are pseudo ranges on L1 and L2 respectively

Differential phase advance STEC

$$STEC = \int_r^{sv} N dr = \left(\frac{f_2^2}{f_1^2 - f_2^2} \right) \frac{2 f_1^2}{K} \Delta L_{1,2}$$

$$= 9.509 E16 \Delta L_{1,2}$$

$\Delta L_{1,2} = \Phi_1 - \Phi_2$ where Φ_1 and Φ_2 are phase measurements on L1 and L2 respectively.

Slant TEC to Vertical TEC

$$TEC = \text{slant TEC} \times \text{map}$$

$$\text{map} = \sqrt{1 - \left(\frac{h_{sp} \cos \varepsilon}{h_{sp} + R_E} \right)^2}$$

R_E -Radius of the Earth

h_{sp} - height of the ionospheric pierce point

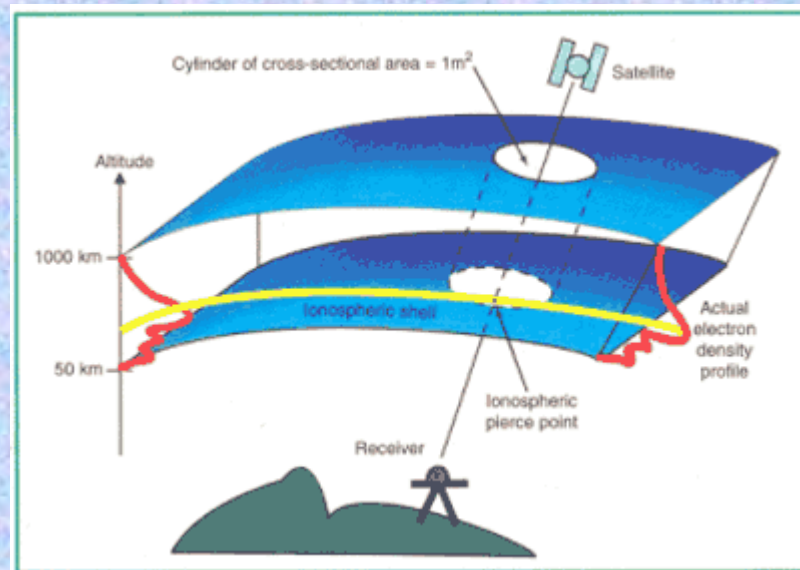


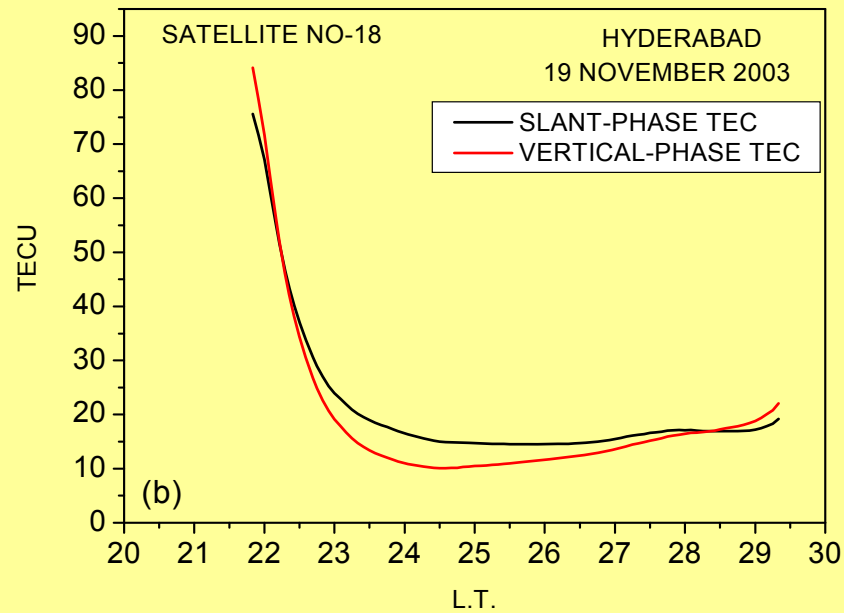
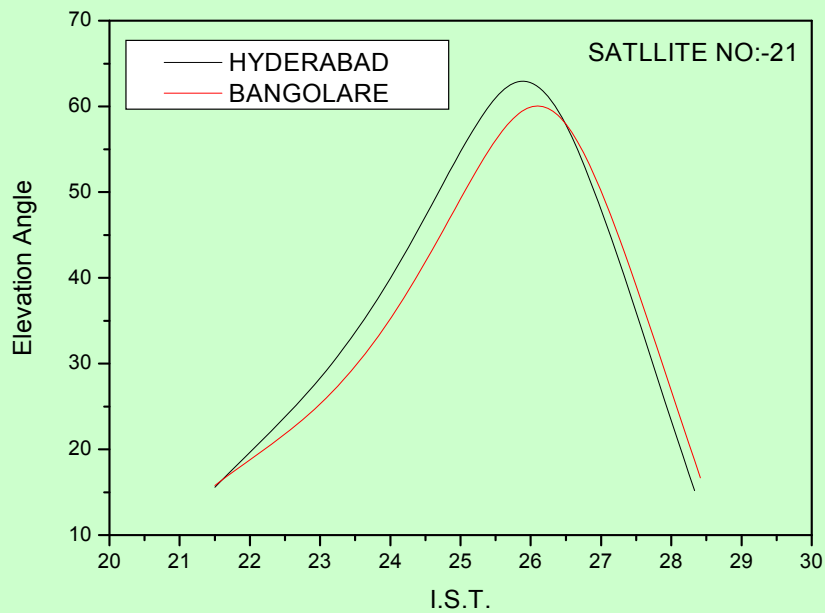
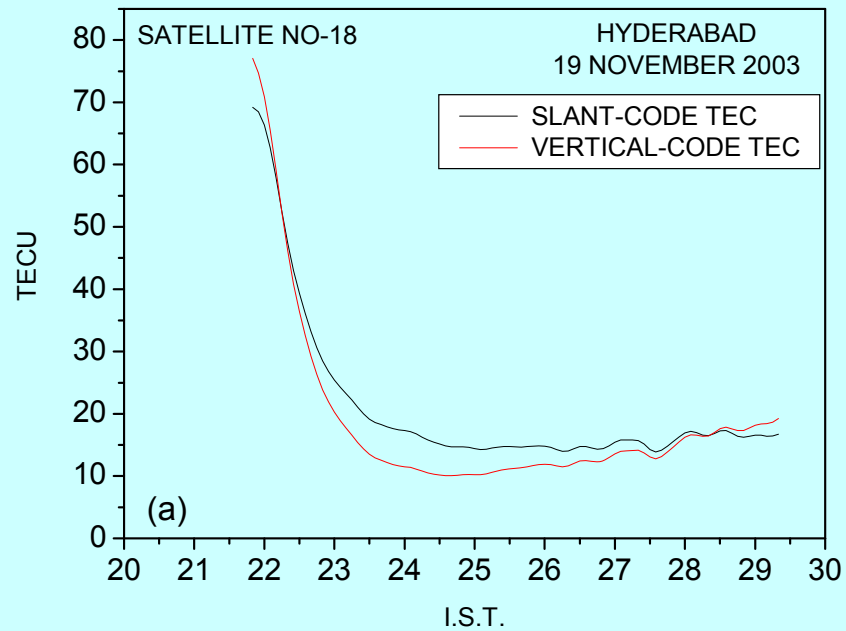
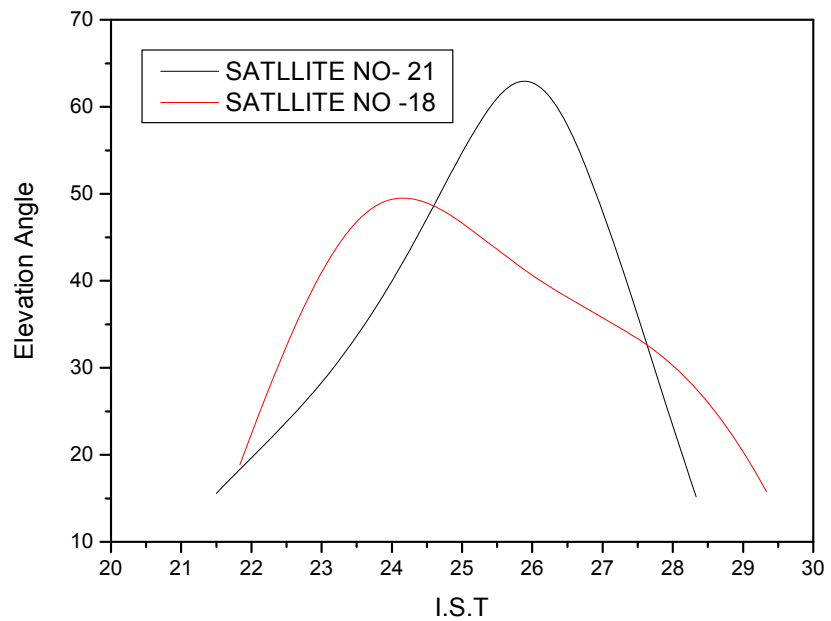
Fig. The ionosphere is represented as thin shell. The variation of electron density shown in red color and the peak value represent the F layer (shown as yellow line) (Fedrizzi et al, 2002)

GPS data Analysis

- 1- RD_RINEX Software
- 2- UNB Ionospheric Modeling Technique
- 3- WinTec Software

The output file of RD_RINEX software

yyyy	mo	dm	hh	mm	ss	##	link	azim	elev	Leveling	PhaseTEC	RawCodeTEC
CodeTEC	CodeTEC	CodeTEC	CodeTEC	CodeTEC	CodeTEC	CodeTEC	CodeTEC	Sat X	Sat Y	Sat Z	Gnd X	Gnd Y
								Gnd Z	PhaseTEC	PhaseTEC		
								Err	Err	Err		
2004	04	18	15	25	00	01	109141901	-51.53	15.95	49421.89	64.41	67.98
66.55							19478177.63	4352761.91	17704136.00	1208447.59	5966820.91	
								1897082.06	3.00			
2004	04	18	15	30	00	01	109141901	-49.60	16.88	49421.89	60.86	63.38
64.08							18881585.07	4667509.07	18265944.10	1208447.59	5966820.91	
								1897082.06	3.00			
2004	04	18	15	35	00	01	109141901	-47.68	17.83	49421.89	57.16	60.35
60.66							18272581.01	5002054.43	18793260.53	1208447.59	5966820.91	
								1897082.06	3.00			
2004	04	18	15	40	00	01	109141901	-45.77	18.81	49421.89	53.98	57.18
56.87							17652902.48	5356434.59	19285101.19	1208447.59	5966820.91	
								1897082.06	3.00			
2004	04	18	15	45	00	01	109141901	-43.88	19.82	49421.89	51.47	50.83
53.30							17024299.16	5730582.10	19740548.59	1208447.59	5966820.91	
								1897082.06	3.00			
2004	04	18	15	50	00	01	109141901	-41.99	20.86	49421.89	49.15	46.67
50.39							16388526.48	6124325.05	20158753.38	1208447.59	5966820.91	
								1897082.06	3.00			
2004	04	18	15	55	00	01	109141901	-40.12	21.94	49421.89	47.24	49.61
48.12							15747338.62	6537387.23	20538935.87	1208447.59	5966820.91	
								1897082.06	3.00			
2004	04	18	16	00	00	01	109141901	-38.27	23.05	49421.89	45.73	47.93
46.26							15102481.58	6969388.66	20880387.30	1208447.59	5966820.91	
								1897082.06	3.00			



The UNB Ionospheric Modelling Technique

Uses single layer ionospheric model (Komjathy, 1996)

$$I(t) = M(e)[a_0(t) + a_1(t)dl + a_2(t)df] + b_r + b^s$$

$I(t)$: L_1-L_2 Phase-levelled ionospheric measurement in TECU,
 $M(e)$: elevation angle mapping function,
 $[a_0(t) + a_1(t)dl + a_2(t)df]$: spatial linear approximation of TEC,
 $b_r + b^s$: Receiver plus Satellite instrumental differential delays.

- Solar-geomagnetic reference frame.
- 5 by 5 longitude/latitude degree grid spacing maps.
- TEC at each grid node computed using the 4 closest stations.

The UNB Ionospheric Modelling Technique contain 4 modules, which will be here referred by the name of the main executables:

- module "prep"
- module "post_glob"
- module "tecmap"
- module "topiri"

Each module is comprised by the main program, subroutines, executables, etc.

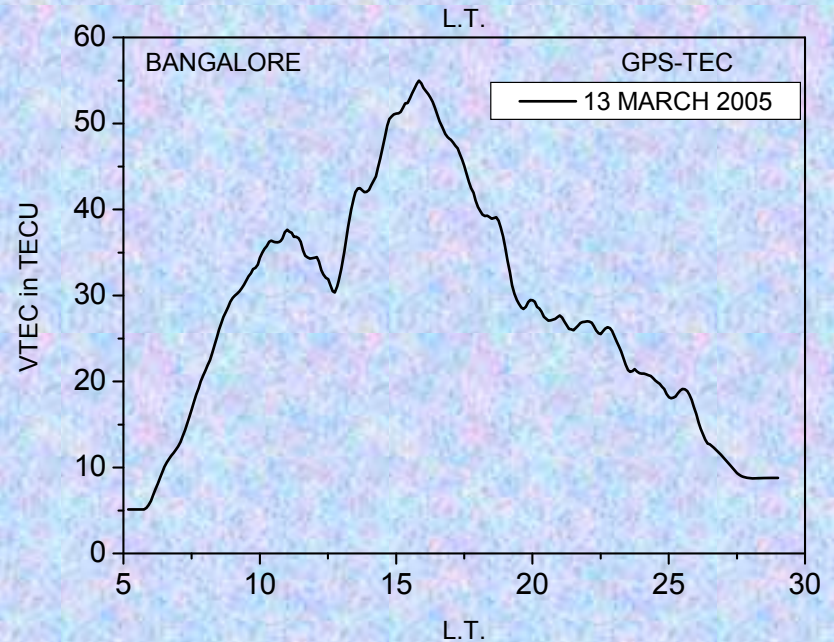
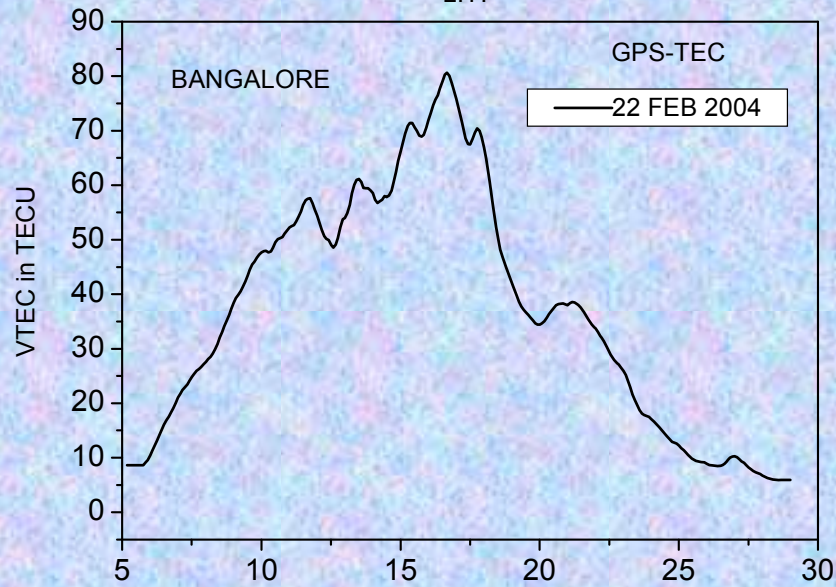
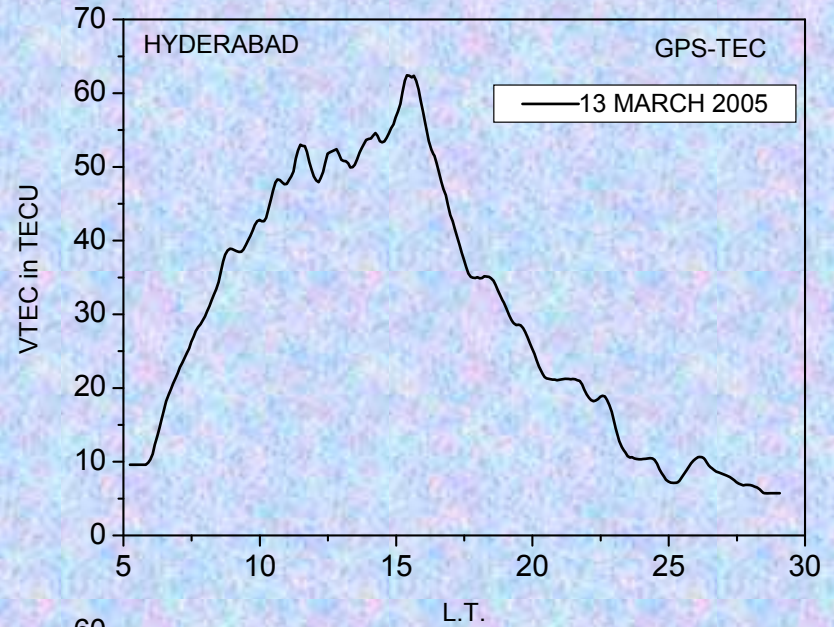
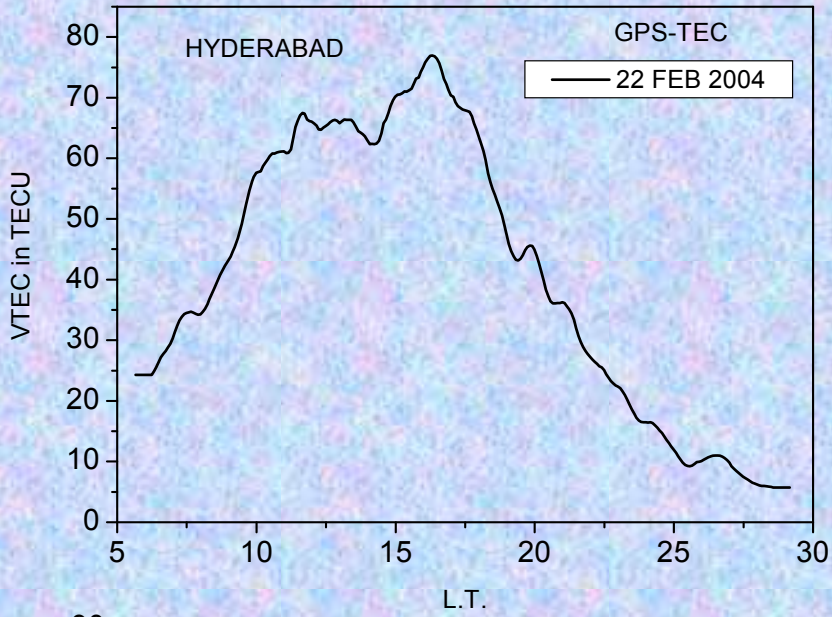
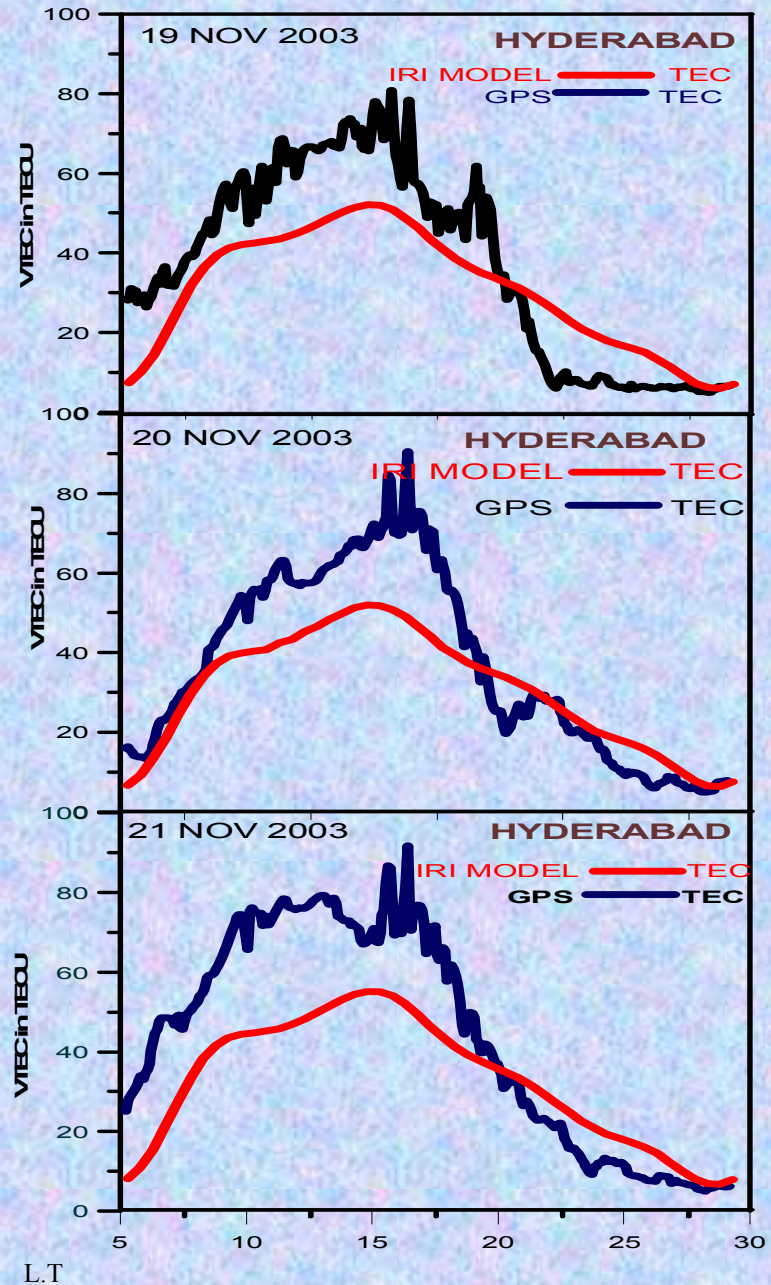


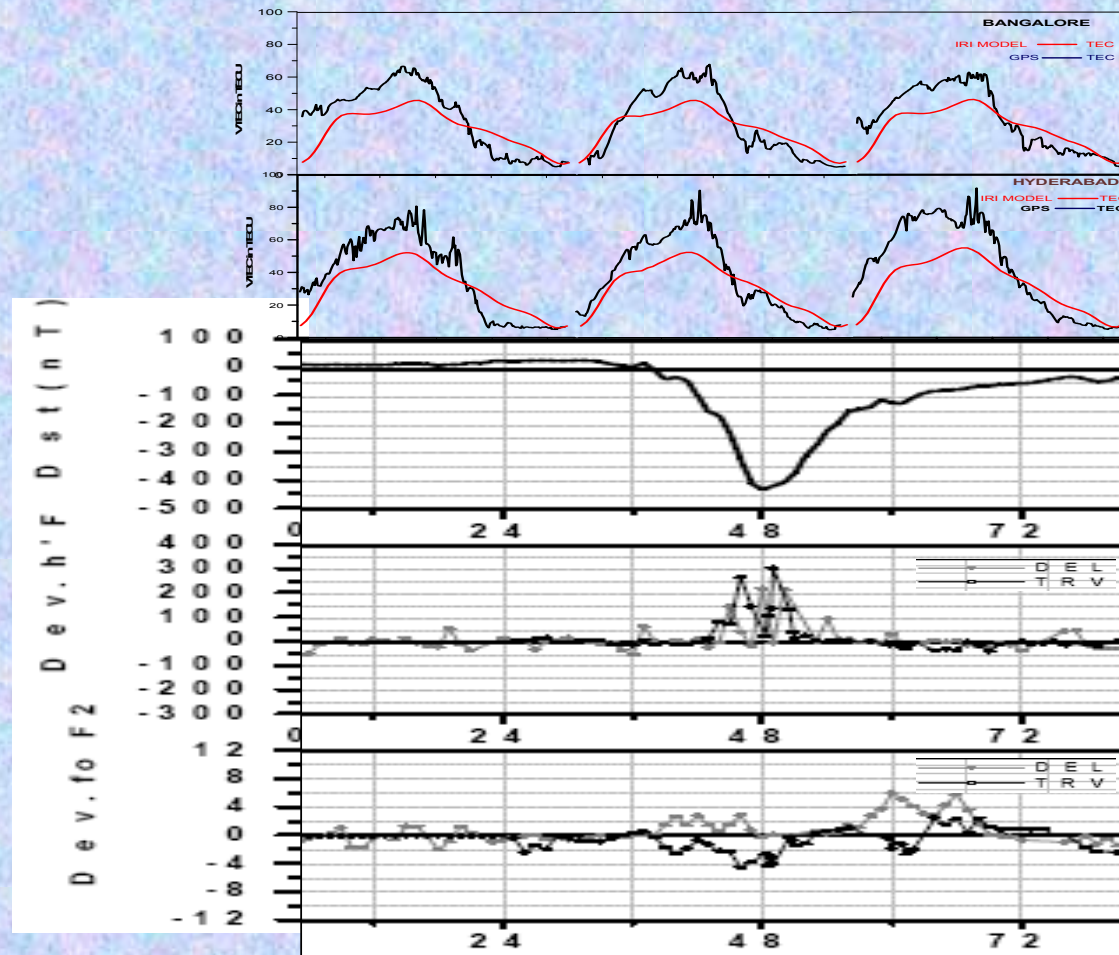
Fig. The VTEC for Hyderabad and Bangalore station on 22 February 2004 respectively using UNB Ionospheric Modeling Technique

Fig. The VTEC for Hyderabad and Bangalore on 13 March 2004 using UNB Ionospheric Modeling Technique

Comparison between IRI-TEC and GPS-TEC

Plot the VTEC values using IRI2000 model and UNB Ionospheric Modeling Technique for three consecutive days November 19-21, 2003. It is clearly seen that IRI model values underestimate the computed TEC values from GPS data mostly during day time hours. However, the agreement is good between 20:00 to 06:00 hours LT. This model seems to give less accurate results for Indian region **UNB results are much more sensitive to the variations in the ionosphere.**





L. T.

Figure .From top to bottom each panel represents computed VTEC (Bangalore),VTEC with IRI-TEC (Hyderabad), Dst(nT), Deviation of h'F (Delhi and Trivendrium) and in bottom panel deviation of foF2 (Delhi and Trivendrium)

Storm: 13-17 May 2005

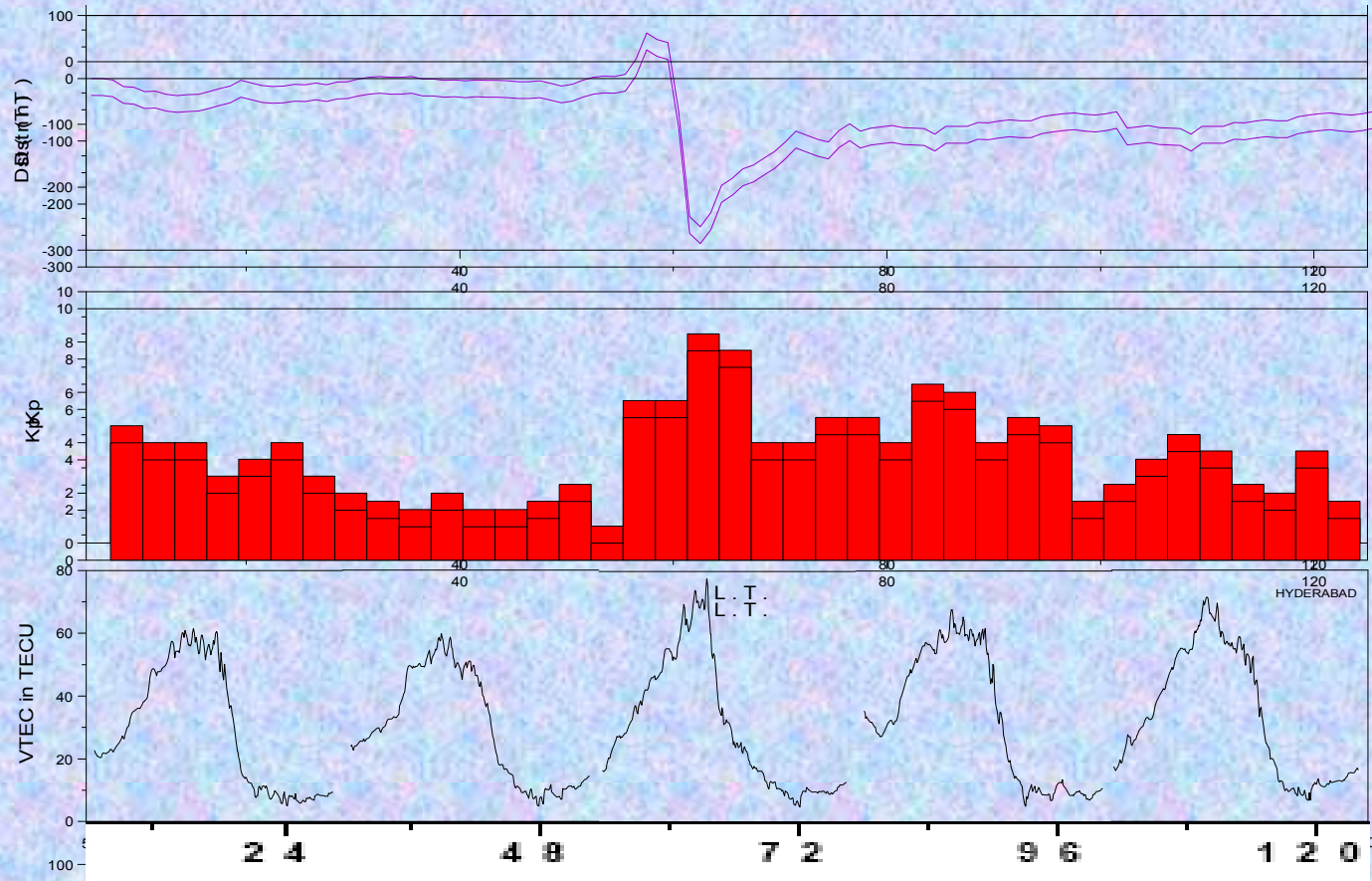
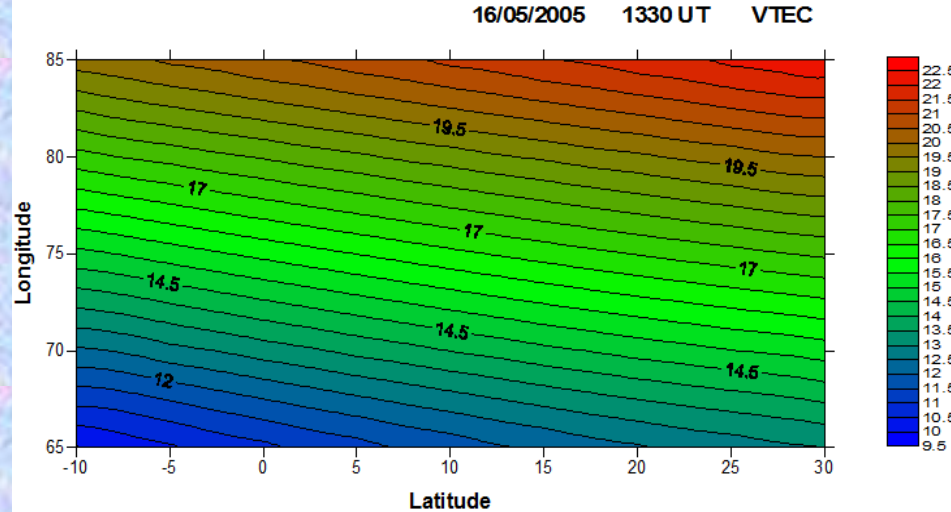
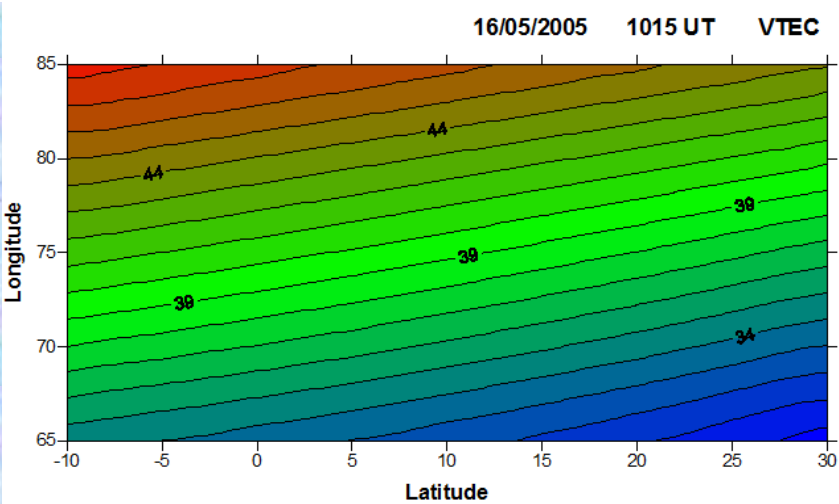
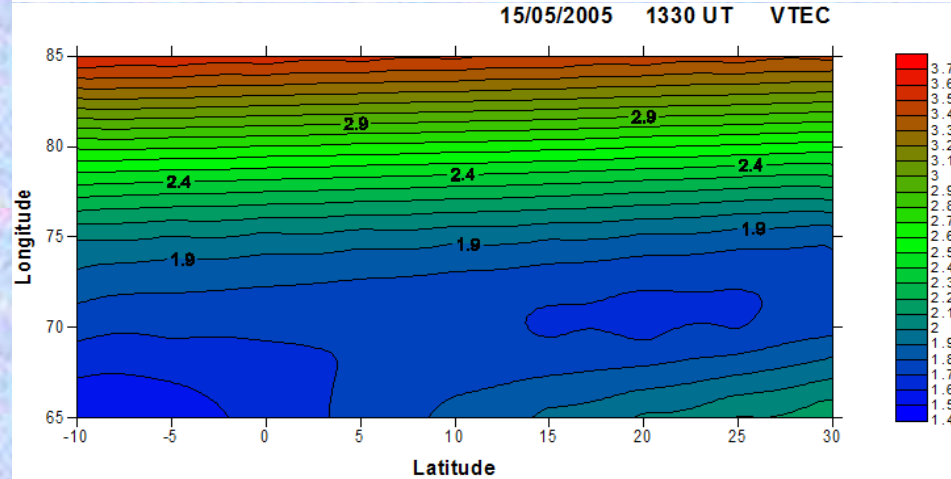
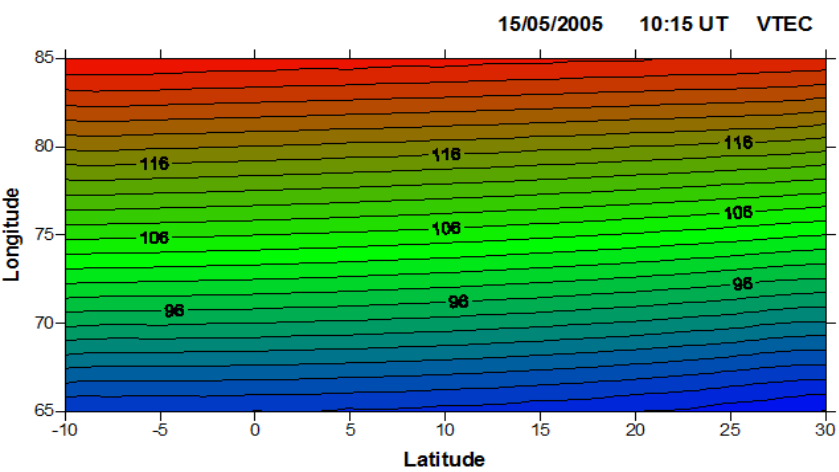
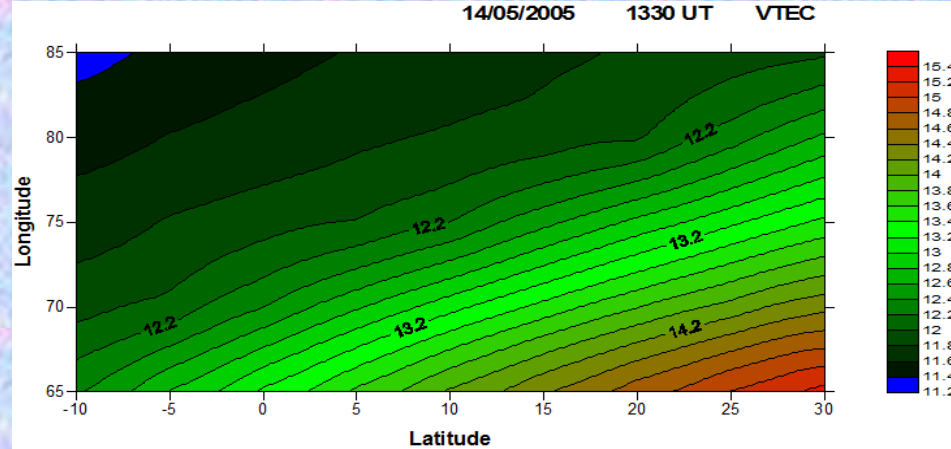
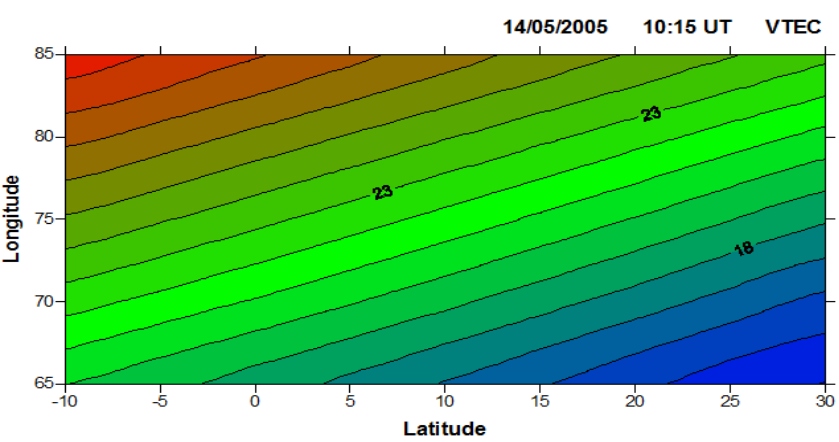
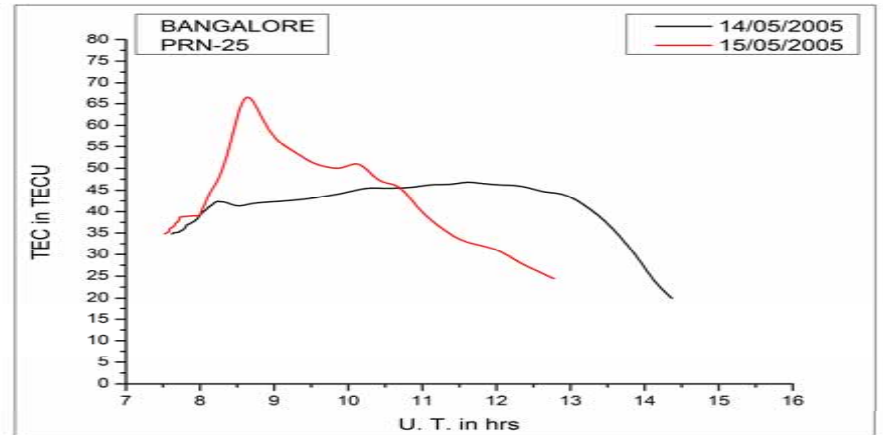
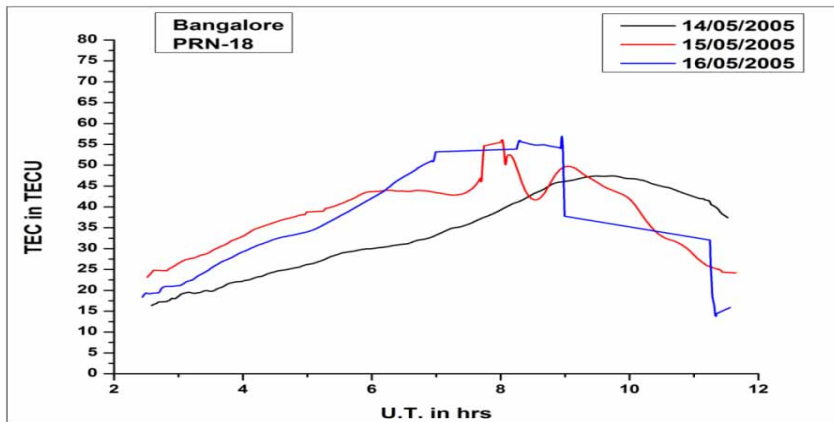
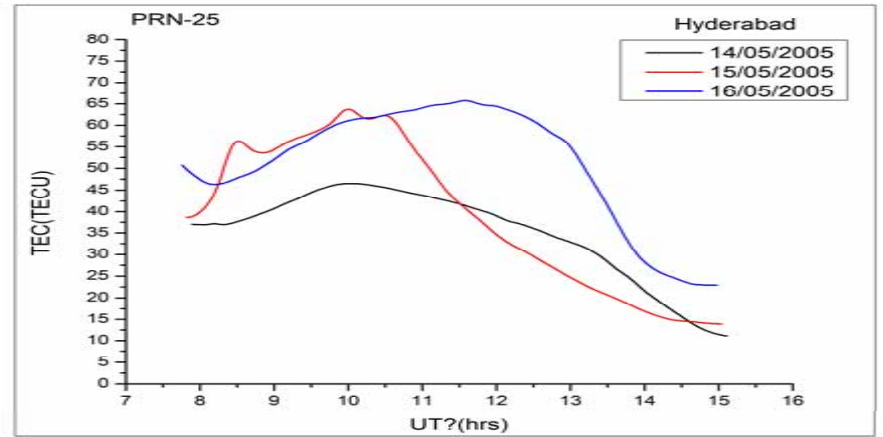
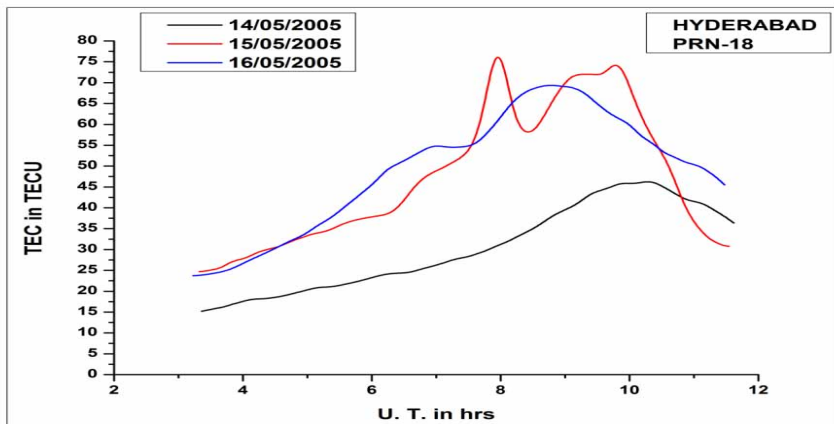
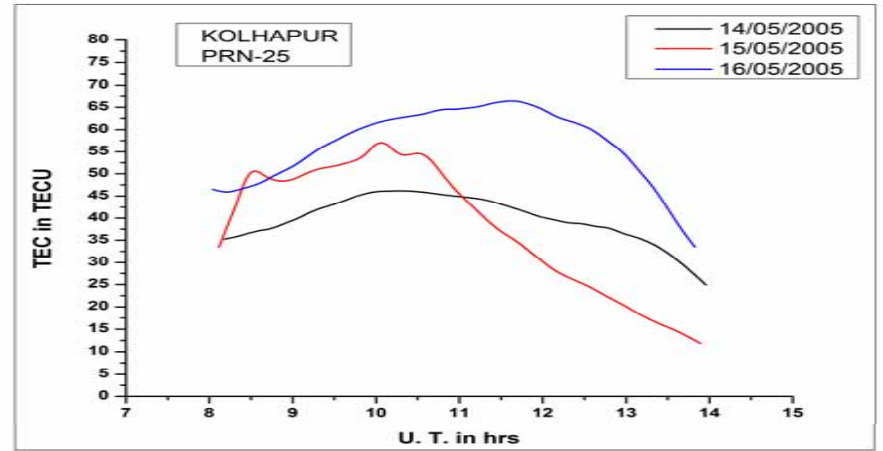
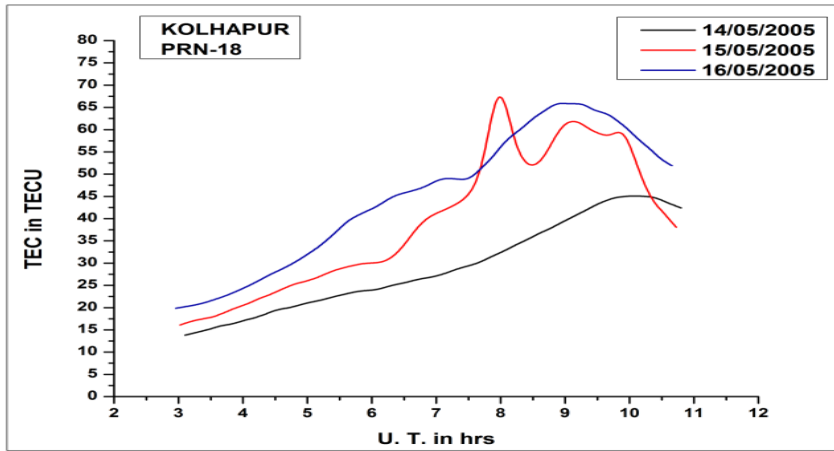
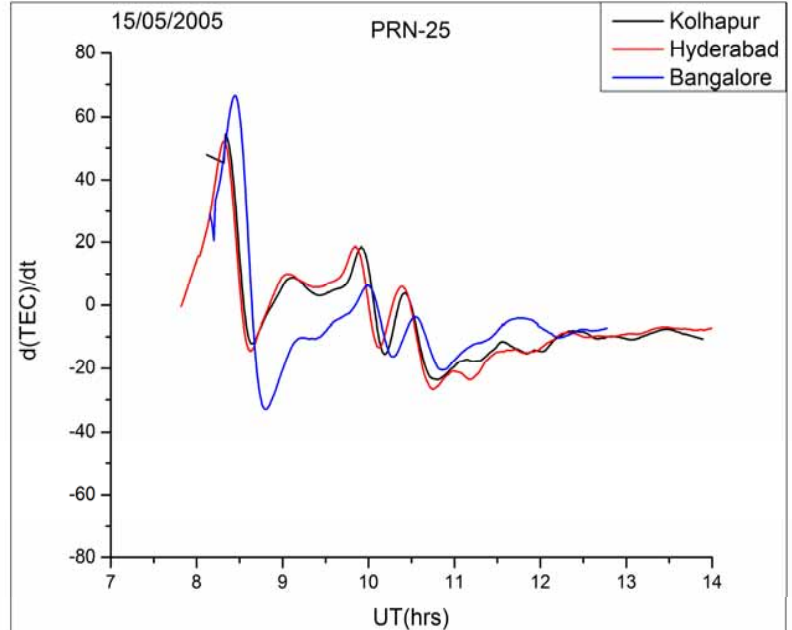
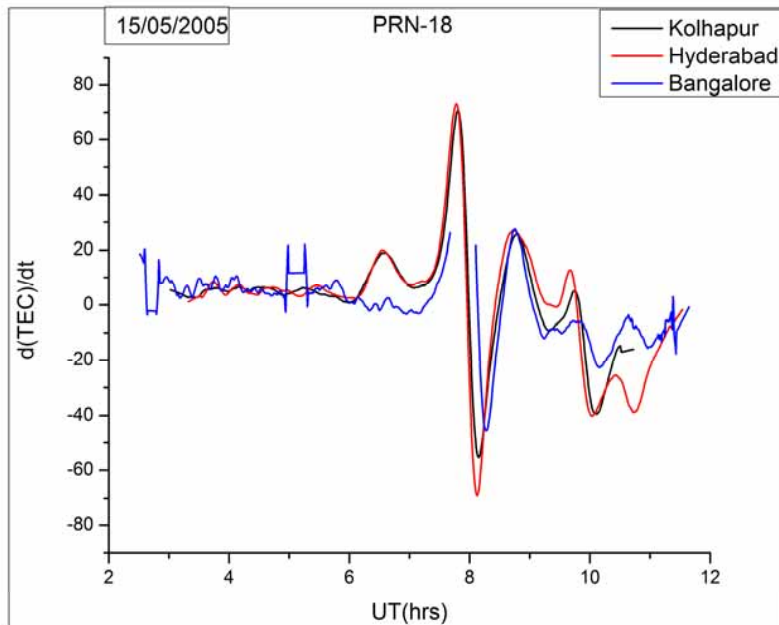
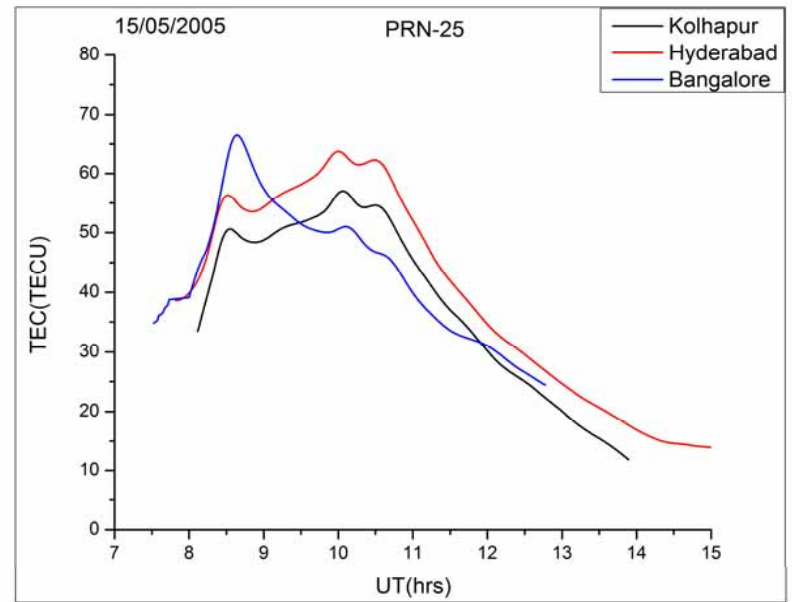
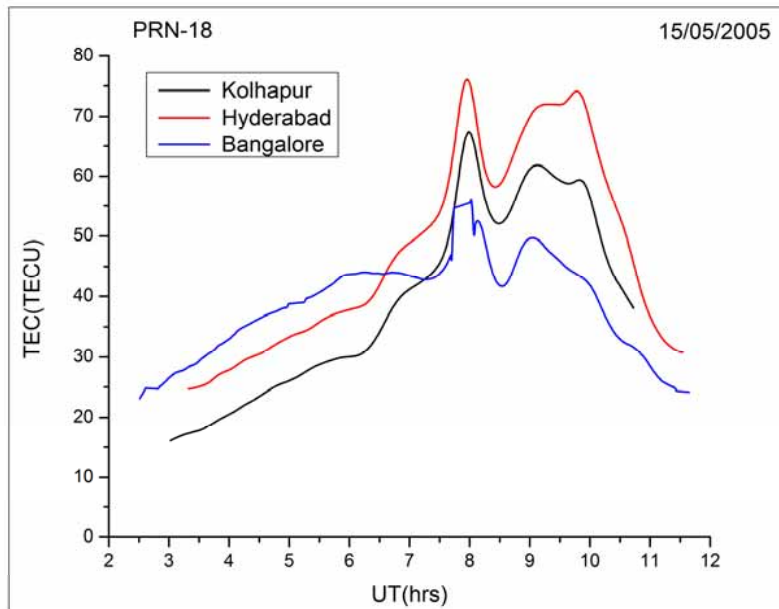


Figure. From bottom to top panel shows VTEC for Hyderabad , bottom panel shows Kp index, and the Dst (nT) index on 13-17 May 2005





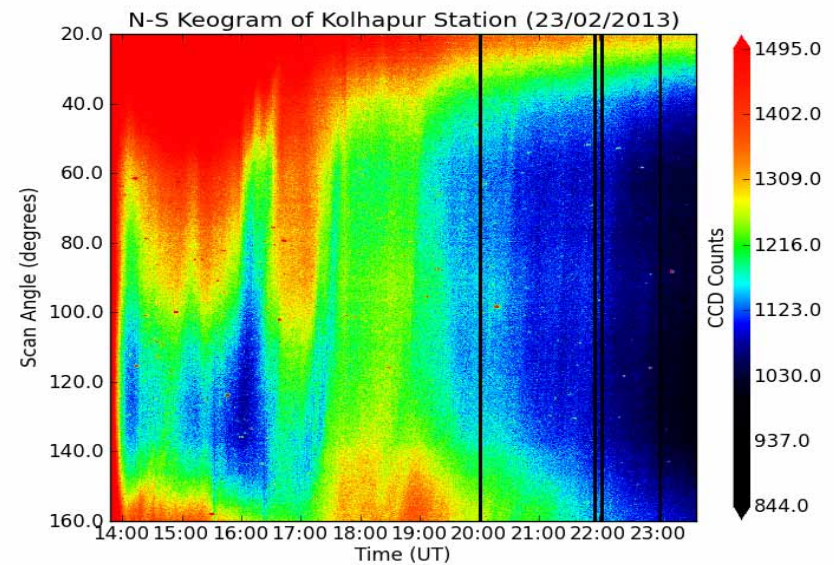
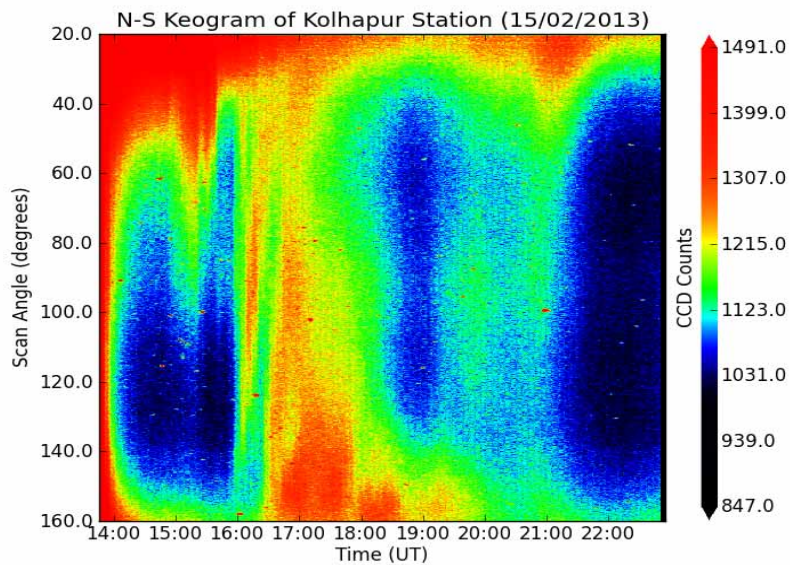


PASKIL

4

The Python All-Sky Image Library (PASKIL) is a collection of Python modules designed to manipulate and process all-sky images. Its plug-in architecture enables it to process images and image meta-data of any format.[Niel Peter, 2009]

All Sky Imager



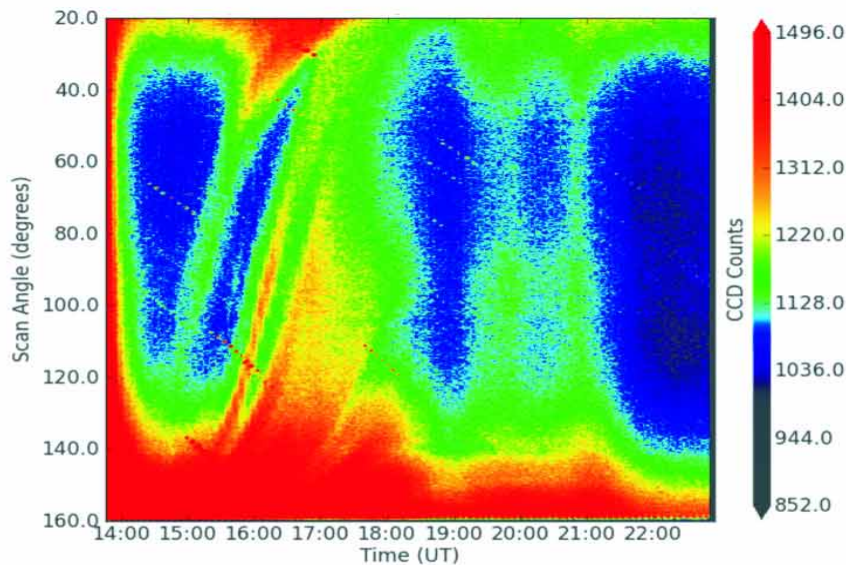


Fig.1: Night Airglow OI630 nm (E-W Keogram of Kolhapur Station) and GPS-TEC observations of Hyderabad station on 15/02/2012.

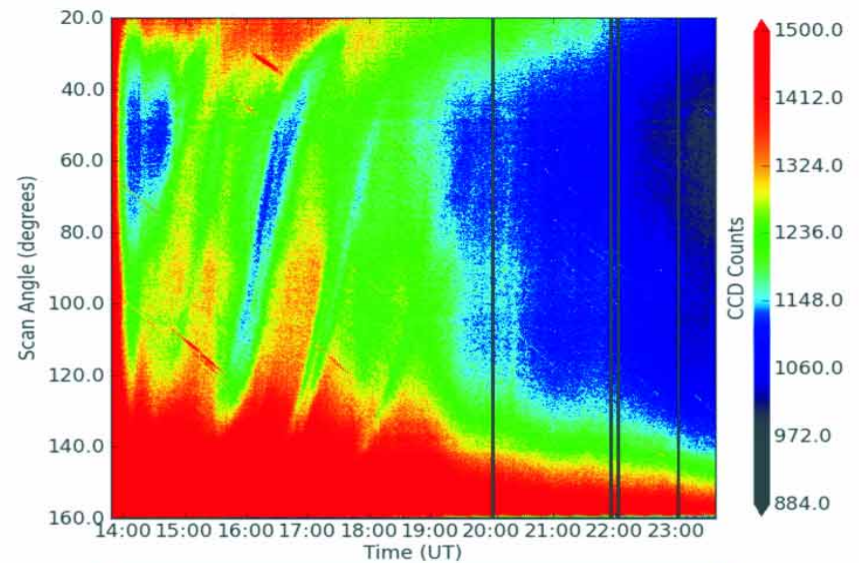
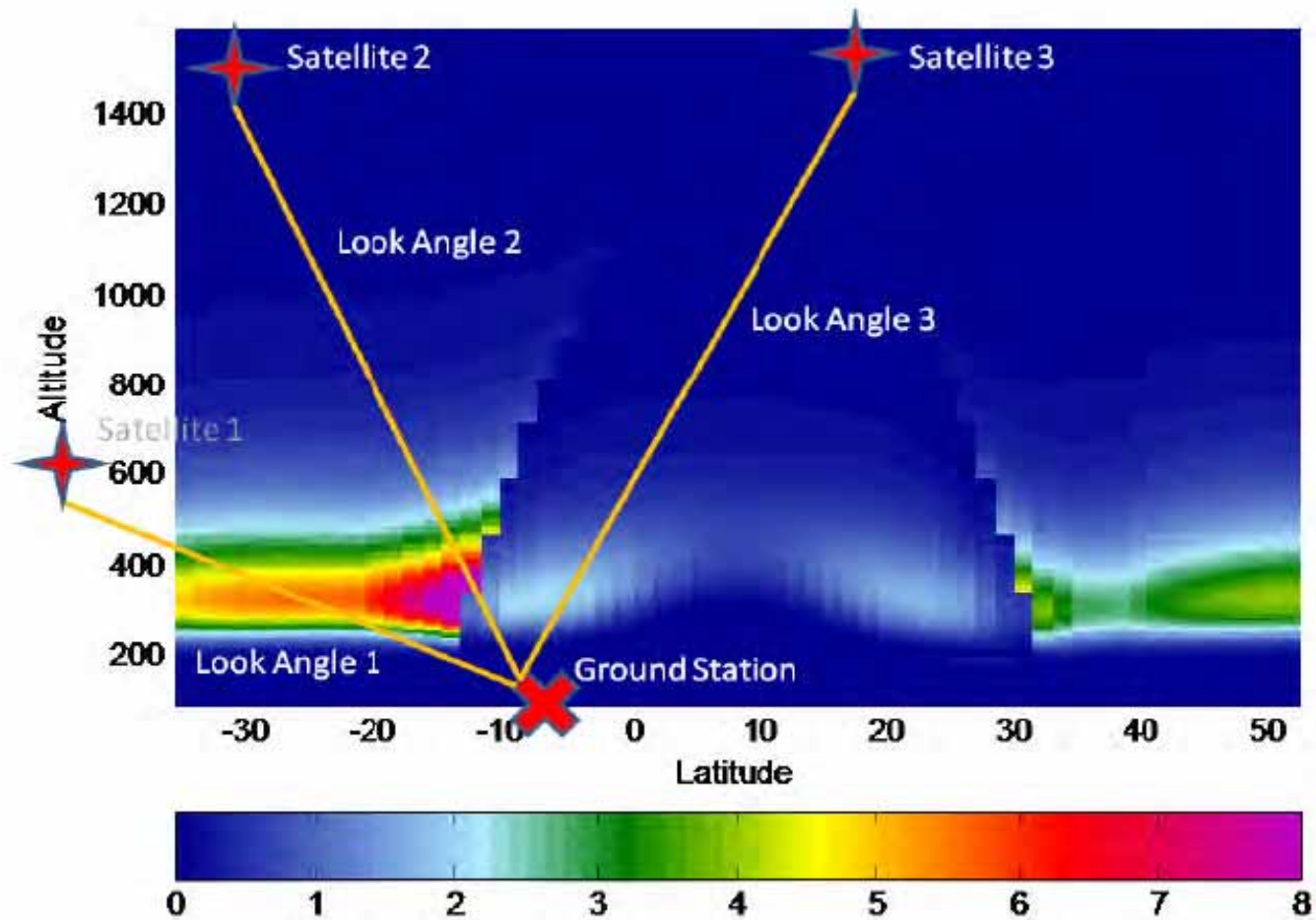


Fig.2: Night Airglow OI630 nm (E-W Keogram of Kolhapur Station) and GPS-TEC observations of Hyderabad station on 23/02/2012.

Simultaneous observations of OI630 nm and TEC were carried out using a CCD based All-Sky Imaging system and GPS system respectively during the month of February /April -2012 at low latitude station Kolhapur (16.8°N, 74.2°E). The radio observation of GPS is also carried out at the nearby station, Hyderabad (17.67°N, 83.32°E) and Bangalore (13.02°N, 77.57°E). The day-to-day variability in the occurrence of Equatorial Spread F (ESF) or Equatorial Plasma Bubble (EPB) is addressed using radio and optical observations from low latitude stations. We have found out the simultaneous occurrence of EPBs in both TEC and OI 630.0 nm emissions using both the techniques.



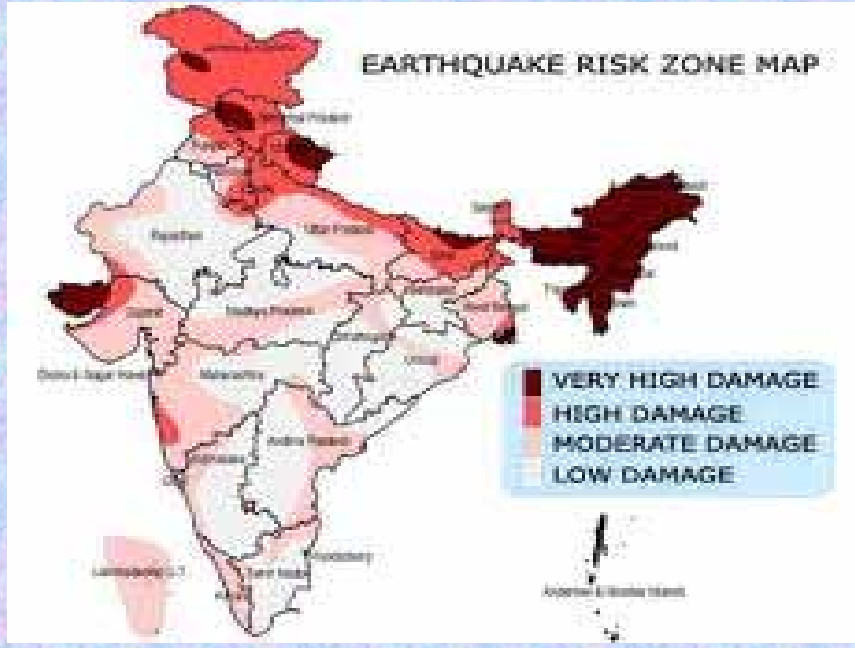
Kenneth R. Fenton, 2011



Intensity: 5.1 Epicentre: Koyna

Koyna-Warna region – Western Maharashtra

The geographical location of Kolhapur is considered to be very unique since it lies midway between the geomagnetic equator, which runs through the southern tip of Indian peninsula and the peak electron density in the F-region of the ionosphere called Appleton anomaly, which lies near the tropic of cancer (23.5°N)



Conclusion

*****The results verified the use of UNB-Ionospheric Modeling Techniques for future ionospheric research over Indian Region.**

*****The methodology to compute TEC from GPS data is being improved, and the continuously increasing number of permanent GPS stations and Ground Based Instrumentation such as Tilting Photometers , All Sky Camera for Night Airglow (OI 630.0 nm emission) study will make possible a more detailed monitoring of the behavior of the ionosphere.**

Future Work

To study the possible mechanism of day-to-day variability in the occurrence of EPBs using radio and optical techniques

To study the effects of Plasma Bubbles on UNB-IMT

In future GPS data from Kolhapur and other available close stations would be used to compute the TEC using UNB-IMT during quiet and disturbed periods.

References:

- 1] Araujo-Pradere A. (2005), GPS-derived total electron content response for Bastille Day Magnetic storm of 2000 at a low mid-latitude station, *Geofisica International*, Vol.44,Num.2,pp.211-218.
- 2] Bilitza D. (2003) " International Reference Ionosphere 2000: Examples of improvements and New features," , *Adv. Space Res.*, Vol. 31, pp. 757-769.
- 3] Komjathy A., Langley R. B. (1996), An Assessment of Predicted and Measured Ionospheric Total Electron Content Using a Regional GPS Network. The Proceedings of the National Technical Meeting of The Institute of Navigation, Santa Monica, CA, 22-24 January, 615-624.
- 4] Mukherjee G. K., and Carlo L., (1994), Night Measurement of Line from Kolhapur, India and their Association with TEC Enhancements, *J. Geomag. Geoelectr.* 46,1029-1041.
- 5] Mukherjee G. K., Shetti D. J. (2008) ,Plasma drift in the F-region of the ionosphere using photometric nightglow measurements, *Indian Journal of Radio and Space Physics*, Vol. 37, pp. 249-257.
- 6] Scherliess, L., R. W. Schunk, J. J. Sojka, D. C.Thompson, and L. Zhu (2006), Utah State University Global Assimilation Ionospheric Measurements Gauss-Markov Kalman filter model of the ionosphere: Model description and validation, *J. Geophys. Res.*, 111, A11315, doi:10.1029/2006JA011712.
- 7] Peters N, Python All-Sky Imaging Library, <http://code.google.com/p/paskil/> ,2009, revision 99.

Acknowledgement

I am grateful to :

Prof. Langley ,Dr. Mariangel Fedrizzi of Geomatics Engineering, University of New Brunswick (UNB), Canada and Dr.Daniel M Moeketsi, Research Scientist Center for High Performance, Computing ,South Africa for providing us a Unix/Linux-based FORTRAN code for the UNB ionospheric modelling technique for scientific research purposes.

Dr. Don Thompson ,Research Scientist,Center for Atmospheric and Space,Sciences,Utah State University, Logan,USA for providing us RD_RINEX code for scientific research purposes

Dr. Eduardo A. Araujio-Pradere,Research Scientist,CIRES- University of Colorado, NOAA- Space Enviroment Center, Boulder, for the WinTEC software for scientific research purposes.

I am also grateful to the IGS community, IIG, New Panvel for making available ground based GPS and Airglow Data and World Data Center for Geomagnetism, Kyoto, Japan for Dst and Kp indices.



Thank You



GOVERNMENT OF INDIA
Ministry of Science and Technology Department of Science and Technology (DST) Technology

Innovation in Science Pursuing Internship

Innovation in Science Students-Scholarship

Hon.

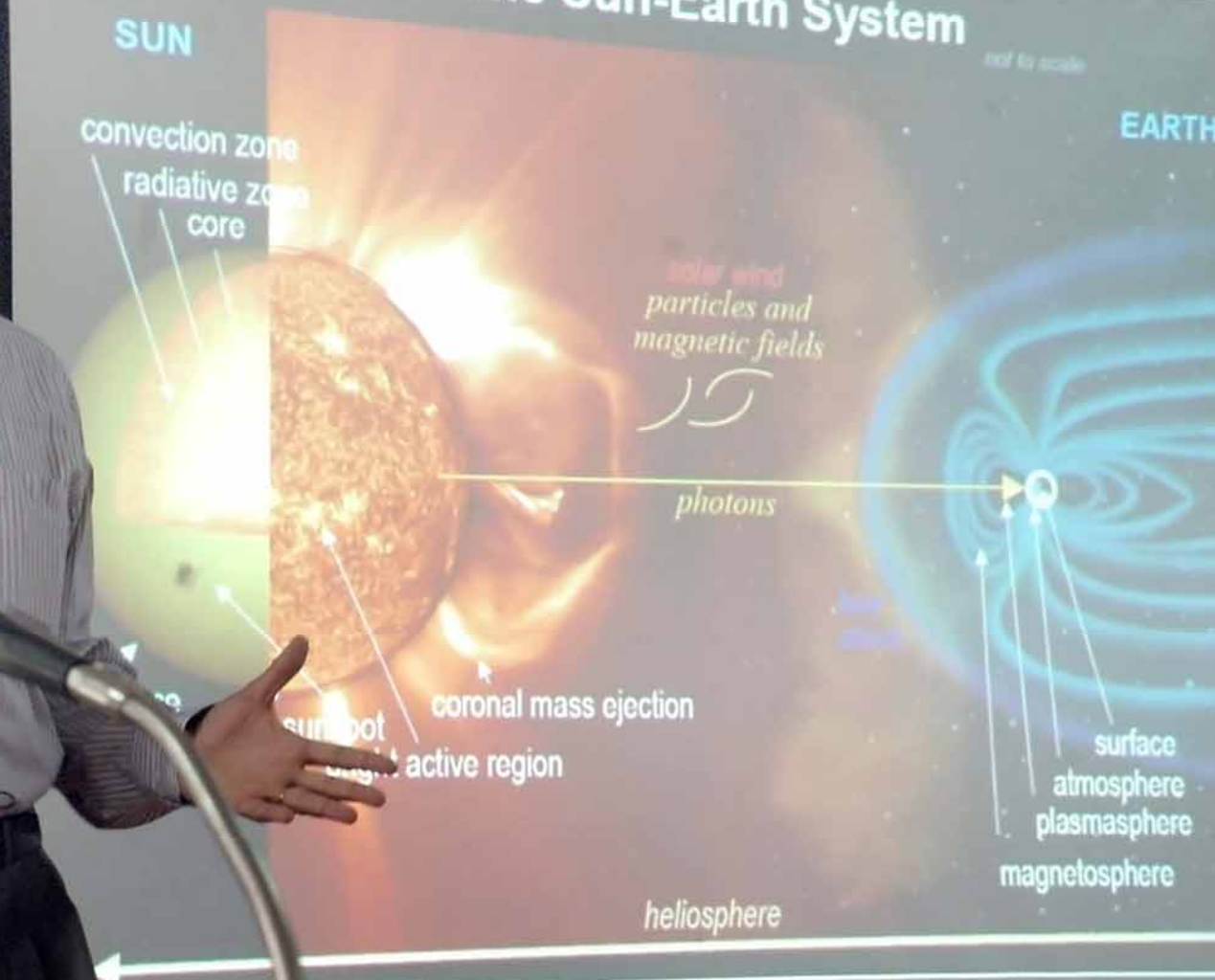
INSPIRE INTERNSHIP-2013





Ministry of Science
inspire Inn

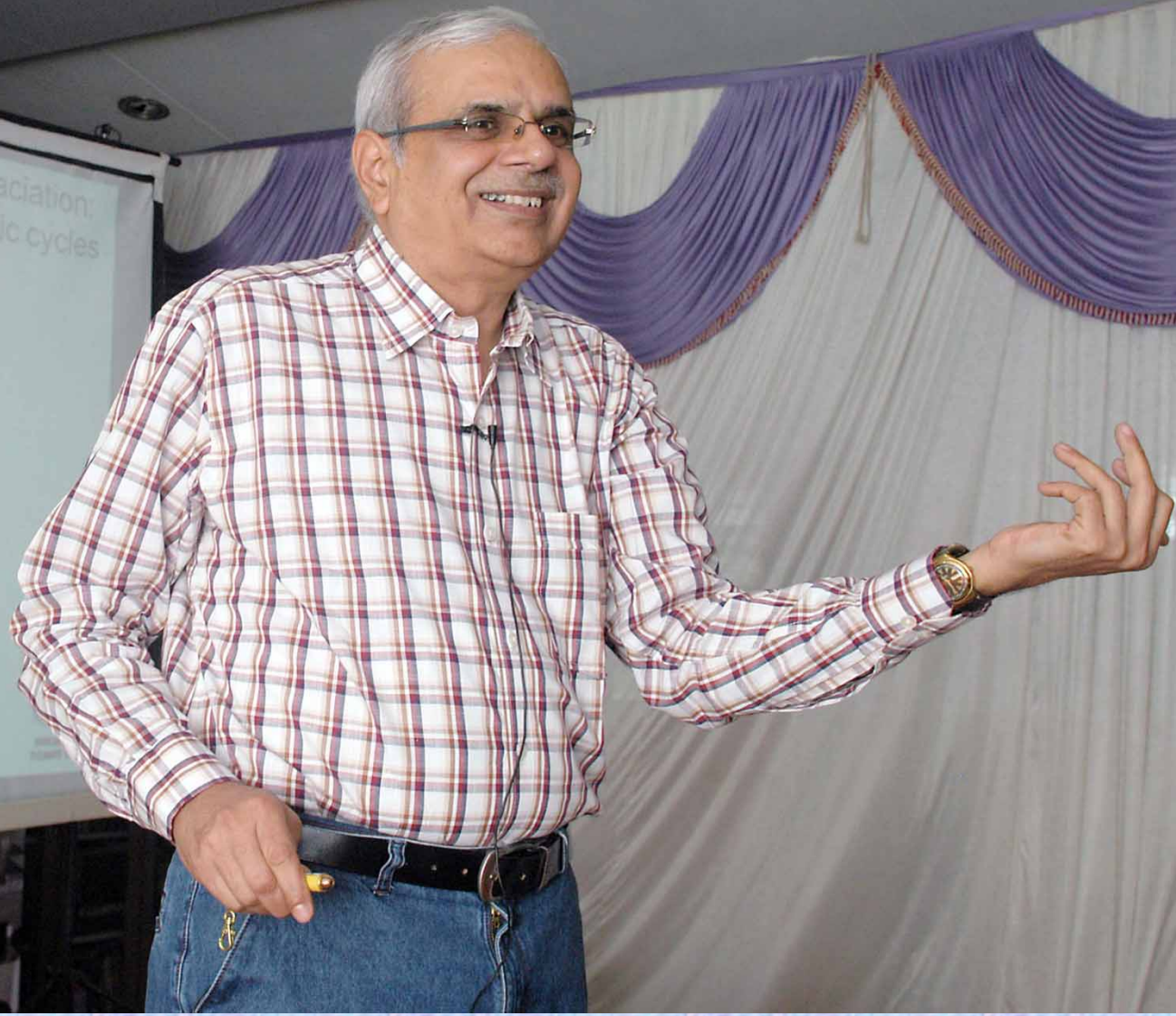
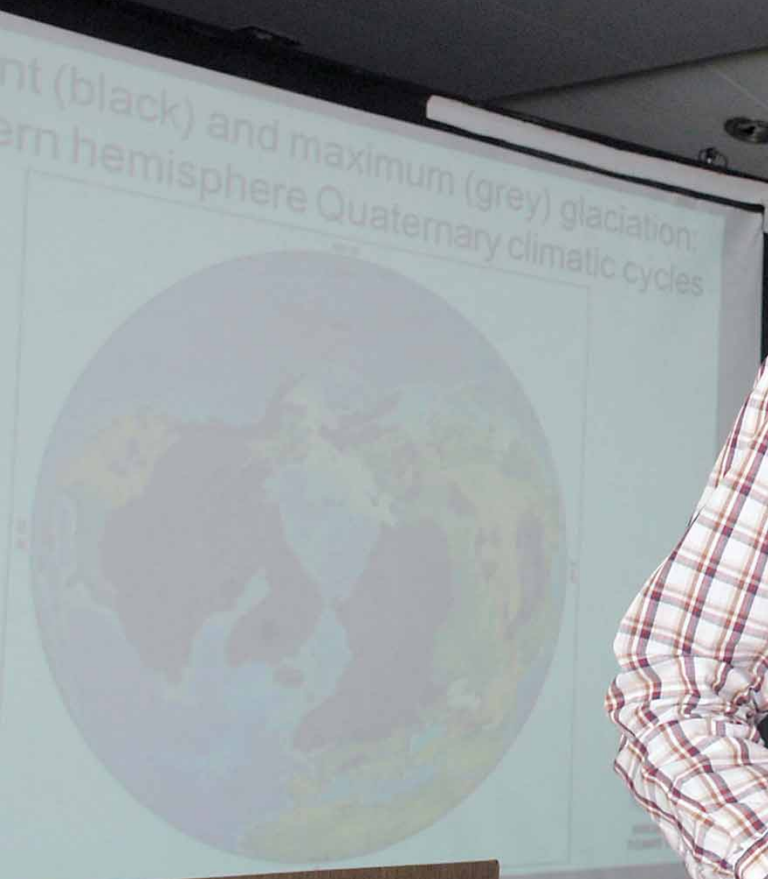
The Sun-Earth System



Prof.(Dr.) D. Pallamraju, PRL, Ahmedabad



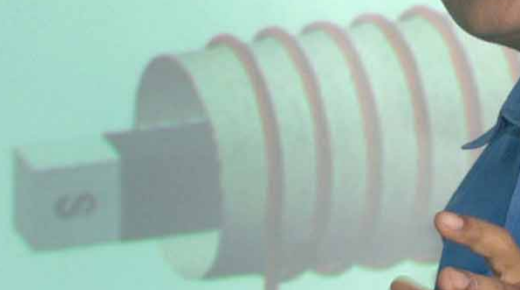
Prof (Dr.). S. Ananatkrishanan



Prof.(Dr.) Anil Kulkarni, SAC, ISRO

Fun with Magnet

Faradays Law of Induction



Mr. V. C. Sonwane HBCSE



Nehru Science Center



Ret. Prof.(Dr.) V.G. Tikekar, IISC, Bangalore











Department of Science and Technology
GOVERNMENT OF INDIA
Department of Science and Technology (DST) Technology Bhavan, New Mehrauli Road, New Delhi - 110016

Innovation in Science Pursuit for Inspired Research

Inspire Internship - 2013

Science Awareness Camp for Jr. College Science Students- Sangli - Kolhapur Region. Sponsored by DST

Inauguration Function

Chief Guest
Hon. Prof. Dr. N. J. Pawar
Chancellor Shivaji University, Kolhapur.

Presided by
Hon. Suresh Patil (Ex. Mayor)
Chairman, Lathe Education Society, Sangli
President Maharashtra State Khadi & Village Industries Board

In the auspicious presence of
Hon. Suhas Patil (Secretary, LES)

Hon. Abhay Patil
Chairman, LES

Hon. Adv. Vijaykumar Sakale
LES

5th August 2013, 10:30 pm.

Organized by
Lathe Education Society
Jr. College, Sangli.



Ministry of Science and Technology Department
GOVERNMENT OF INDIA
Technology Bhavan, New Mehrauli Road, New Delhi - 110016

Innovation in Science Pursuit for Inspired Research

Inspired Internship - 2019

Way Function

Presided by
Shri. Suresh Patil

Shri. K.S. Patil



Inspire Internship-2013

1 Aug To 5 Aug 2013

Organized by



Latthe Education Society's

Smt. Kasturbai Walchand College, Sangli

